

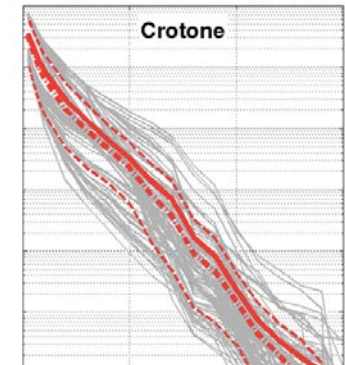
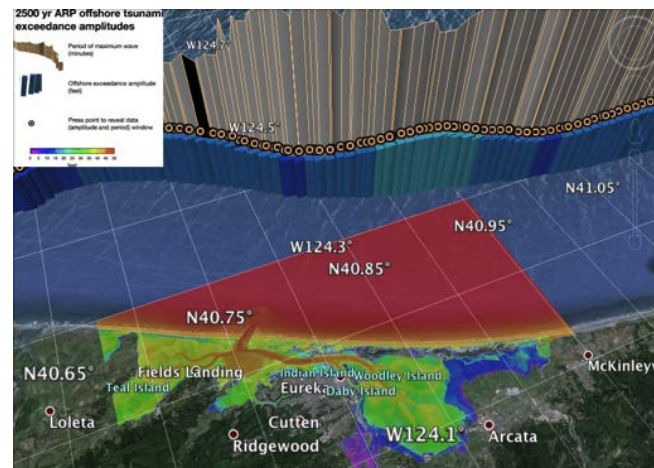
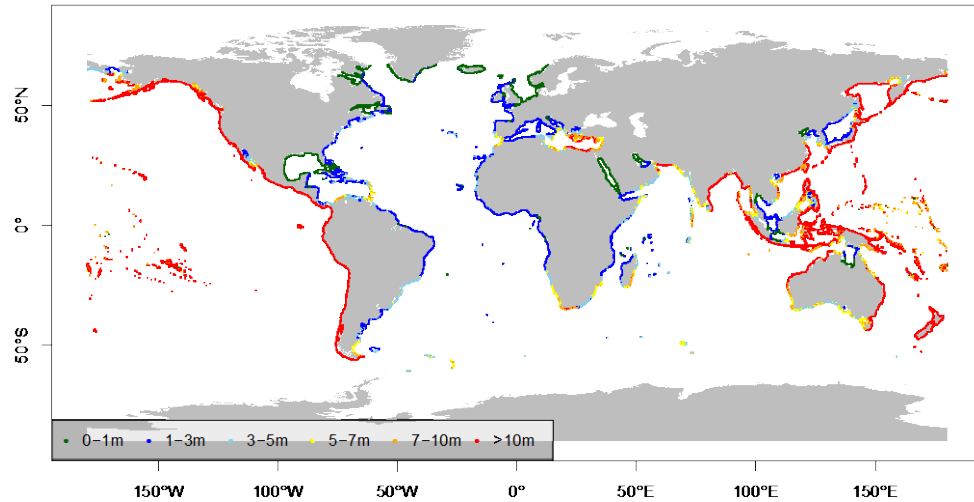


GLOBAL TSUNAMI MODEL (GTM)

Stefano Lorito, INGV, Italy
Finn Løvholt, NGI, Norway
Hong Kie Thio, AECOM, US



1/2500 exceedance rate runup height



- Ensemble mean
- - - Ensemble median
- Ensemble 16-84th percentiles
- Input models of the ensemble



Background and motivation – why did we take this initiative

Gather the scientific community for

- Discuss some open issues
- Improving methods; sharing tools

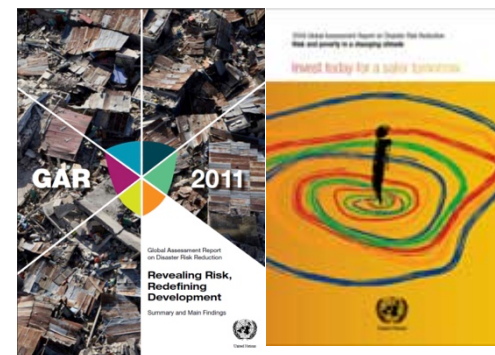
Triggered during Multi-institutional work on hazard and risk for the UN-ISDR (Global Assessment Report, GAR)

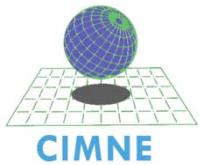
Initiative from the tsunami community itself

GAR

Global Assessment Report on Disaster Risk Reduction

2015





UNISDR

The United Nations Office for Disaster Risk Reduction



W

UNIVERSITY of WASHINGTON

- *Gathering the global network*
- *Formalising UNISDR endorsement*





- *Improved understanding of tsunami hazard and risk (and related disciplines)*
- *Develop standards and guidelines for probabilistic assessment*
- *Harmonize efforts and products (e.g. regional data and projects)*



- *Integration of results and tools with related organizations such as GEM and GVM*



- *Reference regional and global hazard/risk models*
- *Basis for multi-hazard risk assessment (e.g. previous experience in GAR)*





- *Seismic source (probability and modeling)*
- *Non Seismic source (probability and modeling)*
- *Tsunami (probability and modelling)*

- *PTHA (seismic and non-seismic → landslides and volcanoes)*
- *Vulnerability and fragility*
- *Probabilistic Tsunami Risk Assessment*
- *Uncertainty treatment and feasibility*

- *Standards and guidelines for tsunami hazard and risk quantification*
- *Unified code interfaces – harmonization*
- *Dissemination and geoethics (standardized review process – transparency – uncertainty communication)*



Interested? (further info, joining, support)

Stefano Lorito, INGV, Italy

stefano.lorito@ingv.it

Finn Løvholt, NGI, Norway

hong.kie.thio@aecom.com

Hong Kie Thio, AECOM, US

finn.lovholt@ngi.no